

Partners in Education

Washtenaw ISD and Ann Arbor Public Schools

Achievement Initiatives

Teacher-Leader Development through Instructional Networks

A systemic approach to building capacity in teacher-leaders. Each teacher-leader represented receives between 60-120 hours of professional development plus support to lead the instructional work in their school.

- 12 Assessment Literacy
- 7 Science
- 5 Writing
- 4 Reading Apprenticeship
- 2 Adaptive Leadership
- 1 Early Literacy

Additional Professional Development

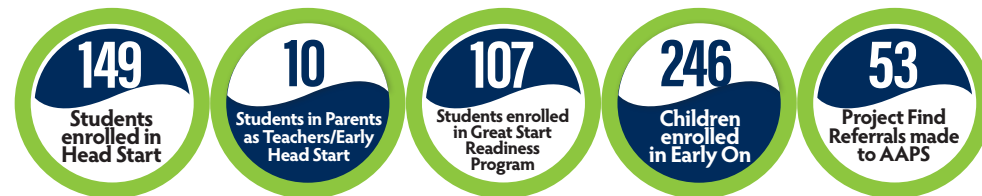
69 EDUCATORS attended additional trainings in Writing Collaborative, Reading Apprenticeship, three literacy summits, Five Tools Science, transgender PD, HIV PD, safe schools (2), and the Network Administrator Planning sessions

61 TEACHERS/LEADERS received technical support through professional learning in Cognitive Coaching (8 day program), Critical Friends (5 day program), SAT Overview, Program Evaluation Tool/School Improvement, Kindergarten Entry Assessment, Title III, Personalized Curriculum Session.

School Culture Survey and Analysis Services

1,185 Students participated in Senior Exit Survey; Customized Senior Exit Survey Report – Pioneer H.S.

363 Students participated in Engage Survey (\$2,178 costs supported by WISD); Customized Engage Report – Skyline H.S.



Early Childhood

Value of all Early Childhood subcontracts with Ann Arbor: **\$1,266,927** (based upon 2014-15 contracts)

Your county educational service agency is committed to providing a variety of services, from professional development to technical support. For over 50 years, Washtenaw ISD has collaborated with local districts to bring innovation and educational excellence to the classroom.

Maintaining communication throughout the county is accomplished through numerous work groups that include: superintendents, board members, business directors, human resource managers, special education directors, principals, curriculum directors, technology directors, maintenance/operations directors, educational network groups, early childhood staff, and the School-Justice Partnership. Positive educational outcomes and cost-savings are realized by working efficiently and effectively together.

This at-a-glance report is designed to provide a snapshot of the services and savings local constituent districts realize through cooperative networking.

Community Partnerships

- ◆ **ALICE (active shooter) Training** – Offered ALICE training to Ann Arbor staff during professional development days in response to the potential of an active shooter.
- ◆ **Education Project for Homeless Youth** – 312 students served
- ◆ **Michigan State Police Safety Grant** - \$252,291
- ◆ Contract facilitation and led Focus school district work at **7** buildings, with support of **\$8,400** in Regional Assistance Grant Funding.
- ◆ **Washtenaw Futures** - a community network helping students complete post-secondary education
 - FAFSA application week – 228 students participated
- ◆ **Youth Diversity Work**
 - Neutral Zone, in partnership with WISD, established Diversity Council at Skyline H.S.
 - AAPS sent high school students and staff to the annual Washtenaw County Youth Diversity Forum in November

Special Education

Total Number of AAPS students served: **206**

- 61** - Deaf/Hard of Hearing Services
- 45** - Visually Impaired Services
- 8** - Forest School
- 22** - High Point School
- 4** - Local Based Classrooms
- 6** - Deaf/Hard of Hearing Program
- 37** - Young Adult Programs
- 14** - Young Adult Project
- 9** - Court-Involved Youth
- WISD Teacher Consultants working with AAPS **12**
- WISD facilitated trainings attended by AAPS teachers **640**
- 264** Number of AAPS Staff participating in START, facilitated by WISD staff
- 376** Number of AAPS Staff completing the Non-Violent Crisis Intervention Training, facilitated by WISD staff

Business Services

Ann Arbor Public Schools utilizes the following WISD Business Services:

- New World financial system and support (partially subsidized)
- Pupil Accounting consultations and audits
- Fiscal agent for various grants
- Fiduciary for WEOC – number of AAPS students

ECA-74	WAVE-35	WIHI-125
--------	---------	----------

Total Grant and Special Education

cost reimbursements.....**\$27,433,065**

(Amounts PAID for the 14-15 fiscal year)

Special Education cost reimbursements (Act 18)	\$22,175,080
IDEA	\$2,978,699
IDEA Preschool	\$93,413
Reimbursement for services to Medicaid eligible students	\$872,667
Great Start Readiness Program	\$305,141
Head Start	\$754,907
Perkins	\$137,445
Adult Education	\$103,320

Substitute Reimbursements

Assessment Literacy	\$2,488
Math & Science	\$1,687
Writing Collaborative	\$3,688
Reading Apprenticeship	\$3,510
Study of Early Literacy	\$1,020

Human Resources and Legal Services

Fingerprinting services

- ▶ 496 individuals fingerprinted
- ▶ 210 PESG clearance to work forms
- ▶ 310 fingerprints disseminated
- **609 background checks for all PESG*** substitutes in Washtenaw county –

County wide expense total **\$144,542.29**

*PESG – Professional Educational Services Group (an educational staffing vendor)

Operations/Event Services

Conferred on projects with all districts and all facilities managers

Convened **10** countywide meetings

AAPS used WISD facilities for **107** meetings
Sheraton equivalent cost of **\$86,094**

Savings through cooperative bids in construction management, electricians, plumbers, HVAC techs and mechanical services

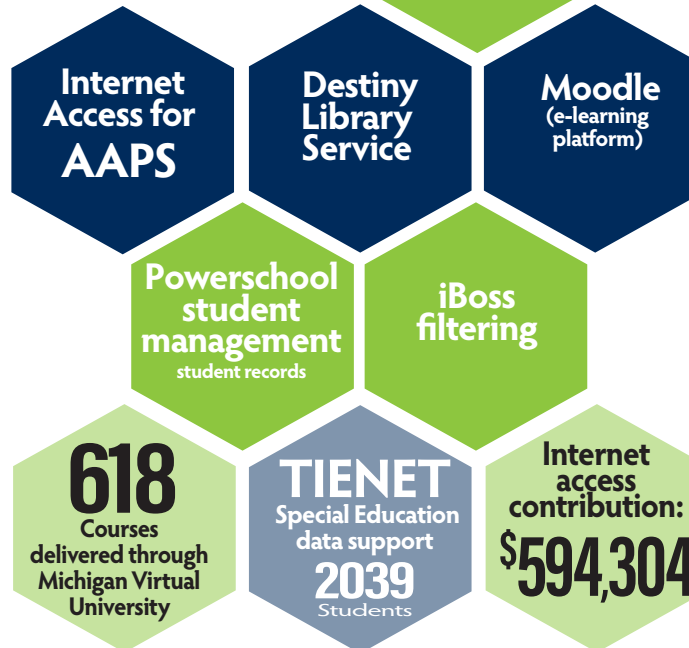
Managed the installation of over **\$500,000**

of a Michigan State Police grant with all school districts

AAPS had **1,226** registered participants at WISD classes

Technology/Data Management

16,812 STUDENTS



Cooperative Services:

- AppliTrack
- United Streaming
- Data Director
- Career Cruising (EDP)

Savings by AAPS through REMC cooperative educational purchases -

\$220,791