

# Partners in Education

## Washtenaw ISD and Lincoln Consolidated Schools

### Achievement Initiatives

#### Teacher-Leader Development through Instructional Networks

A systemic approach to building capacity in teacher-leaders. Each teacher-leader represented receives between 60-120 hours of professional development plus support to lead the instructional work in their school.

#### Additional Professional Development

**28 TEACHERS AND LEADERS**

attended additional trainings in Writing Collaborative, Reading Apprenticeship, three literacy summits, 5 Tools Science, transgender PD, HIV PD, safe schools (2), and the Principals' Academy

- 5 Science Workgroup
- 5 Intel Math
- 2 Assessment Literacy
- 2 Culture & Diversity
- 1 Early Literacy

**12 TEACHERS AND LEADERS**

received technical support through professional learning in Cognitive Coaching, Critical Friends, SAT Overview, Program Evaluation Tool/School Improvement, Kindergarten Entry Assessment, Title III, Personalized Curriculum Session

Your county educational service agency is committed to providing a variety of services, from professional development to technical support. For over 50 years, Washtenaw ISD has collaborated with local districts to bring innovation and educational excellence to the classroom.

Maintaining communication throughout the county is accomplished through numerous work groups that include: superintendents, board members, business directors, human resource managers, special education directors, principals, curriculum directors, technology directors, maintenance/operations directors, educational network groups, early childhood staff, and the School-Justice Partnership. Positive educational outcomes and cost-savings are realized by working efficiently and effectively together.

This at-a-glance report is designed to provide a snapshot of the services and savings local constituent districts realize through cooperative networking.

### Community Partnerships

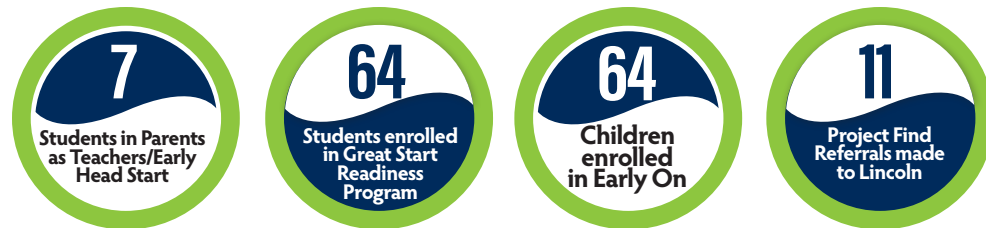
- ◆ **ALICE Training** – Lincoln staff trained in response to the potential of an active shooter.
- ◆ **Education Project for Homeless Youth** – 209 students served
- ◆ **Grants**
  - Recycling Grant - **\$4,000**
  - Michigan State Police Safety Grant - **\$59,630**
- ◆ **Washtenaw Futures**
  - College Application Week – 180 students participated
  - FAFSA Completion event – 157 students participated
- ◆ **Youth Diversity Work**
  - Lincoln sent high school students and staff to the annual Washtenaw County Youth Diversity Forum in November
  - Neutral Zone, in partnership with WISD, established a Diversity Council at Lincoln H.S.
- ◆ **WISD staff responded to a request to assist LCS with a crisis related to a student death**

### Special Education

Total Number of LCS students served:	<b>71</b>
<b>26</b>	- Deaf/Hard of Hearing Services
<b>9</b>	- Visually Impaired Services
<b>7</b>	- Forest School
<b>11</b>	- High Point School
<b>3</b>	- Local Based Classrooms
<b>1</b>	- Deaf/Hard of Hearing Program
<b>10</b>	- Young Adult Programs
<b>3</b>	- Young Adult Project
<b>1</b>	- Court-Involved Youth
WISD Teacher Consultants working with LCS	<b>5</b>
WISD facilitated trainings attended by LCS teachers	<b>92</b>
<b>5</b>	Number of LCS Staff participating in START, facilitated by WISD staff
<b>82</b>	Number of LCS Staff completing the Non-Violent Crisis Intervention Training, facilitated by WISD staff

#### School Culture Survey and Analysis Services

<b>273</b> Students participating in Senior Exit Survey	<b>320</b> Participation in Engage Survey - (consortium pricing \$1,920); Customized Engage Report – Lincoln H.S.
---	---



### Early Childhood

Value of all Early Childhood subcontracts with Lincoln: **\$259,200** (based upon 2014-15 contracts)



Information included in this document is for the 2014-15 school year; student numbers were collected from Fall 2014.

## Business Services

Lincoln Consolidated Schools utilizes the following WISD Business Services:

- New World financial system and support (partially subsidized)
- Pupil Accounting consultations and audits
- Fiscal agent for various grants
- Fiduciary for WEOC - number of LCS students served:

ECA -141	WAVE -87	WIHI -47
----------	----------	----------

**Total Grant and Special Education cost reimbursements**.....**\$6,931,078**

(Amounts PAID for the 14-15 fiscal year)

Special Education cost reimbursements (Act 18)	\$5,642,465
IDEA	\$1,167,635
IDEA Preschool	\$51,383
Great Start Readiness Program	\$68,736

## Substitute Reimbursements

Assessment Literacy ..... \$548  
 Math & Science ..... \$311

## Human Resources and Legal Services

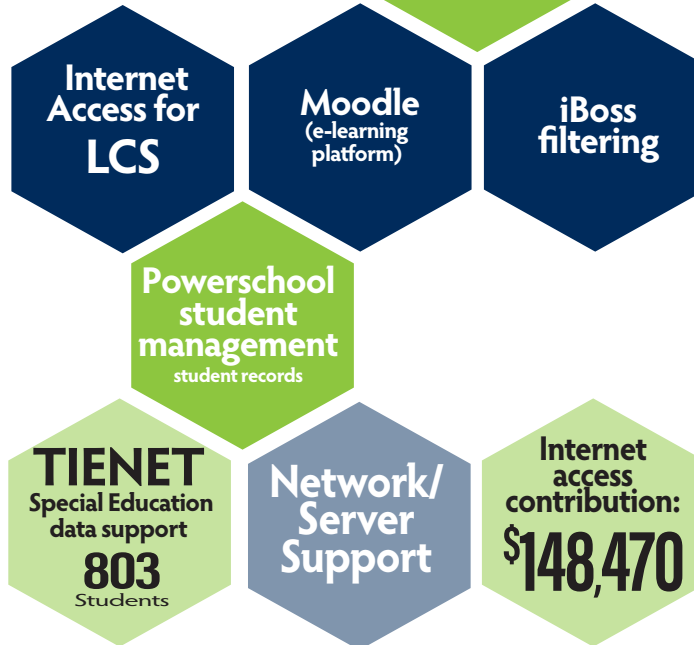
- **Fingerprinting services**
  - ▶ 46 individuals fingerprinted
  - ▶ 72 PESG clearance to work forms
  - ▶ 89 fingerprints disseminated
- **609 background checks for all PESG\*** substitutes in Washtenaw county –

County wide expense total **\$144,542.29**

\*PESG – Professional Educational Services Group (an educational staffing vendor)

## Technology/Data Management

**4,200**  
STUDENTS



## Operations/Event Services

Conferred on projects with all districts and all facilities managers

Convened **10** countywide meetings

Managed the recycling grant

LCS used WISD facilities for **1** meeting  
 Sheraton equivalent cost of **\$210**

Savings through cooperative bids in construction management, electricians, plumbers, HVAC techs and mechanical services

Managed the installation of over

**\$500,000**

of a Michigan State Police grant with all school districts

LCS had **196** registered participants at WISD classes

## Cooperative Services:

- AppliTrack
- Help Desk Service
- United Streaming
- Data Director
- Career Cruising (EDP)

Savings by LCS through REMC cooperative educational purchases -

**\$74,164**