

Partners in Education

Washtenaw ISD and Saline Area Schools

Achievement Initiatives

Teacher-Leader Development through Instructional Networks

A systemic approach to building capacity in teacher-leaders. Each teacher-leader represented receives between 60-120 hours of professional development plus support to lead the instructional work in their school.

- 5 Science Workgroup
- 4 Writing Collaborative
- 1 Reading Apprenticeship
- 1 Adaptive Leadership

Additional Professional Development

23 TEACHERS AND LEADERS

attending additional trainings in Writing Collaborative, Reading Apprenticeship, three literacy summits, 5 Tools Science, transgender PD, HIV PD, two safe schools (2), and the Principals' Academy

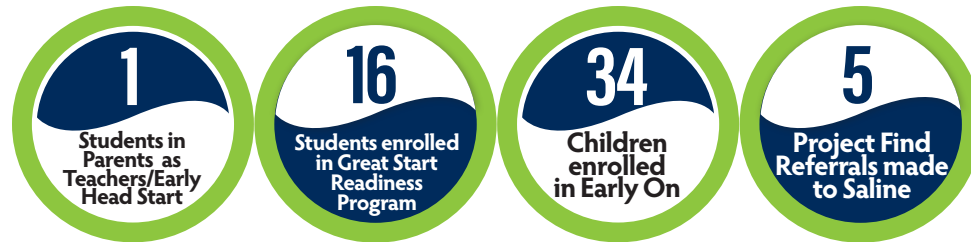
12 TEACHERS AND LEADERS

received technical support through professional learning in Cognitive Coaching, Critical Friends, SAT Overview, Program Evaluation Tool/School Improvement, Kindergarten Entry Assessment, Title III, Personalized Curriculum Session

School Culture Survey and Analysis Services

272 Students participating in Senior Exit Survey

496 \$2,976 for students participating in Engage Survey (consortium pricing); Customized Engage Report – Saline H.S.



Early Childhood

Value of all Early Childhood subcontracts with Saline:

\$65,890 (based upon 2014-15 contracts)

Your county educational service agency is committed to providing a variety of services, from professional development to technical support. For over 50 years, Washtenaw ISD has collaborated with local districts to bring innovation and educational excellence to the classroom.

Maintaining communication throughout the county is accomplished through numerous work groups that include: superintendents, board members, business directors, human resource managers, special education directors, principals, curriculum directors, technology directors, maintenance/operations directors, educational network groups, early childhood staff, and the School-Justice Partnership. Positive educational outcomes and cost-savings are realized by working efficiently and effectively together.

This at-a-glance report is designed to provide a snapshot of the services and savings local constituent districts realize through cooperative networking.

Community Partnerships

- ◆ **ALICE Training** – Saline staff trained in response to the potential of an active shooter.
- ◆ **Education Project for Homeless Youth** – 29 students served
- ◆ **Grants**
 - Recycling Grant – \$4,000
 - Michigan State Police Safety Grant – \$79,476
- ◆ **Youth Diversity Work**
 - Saline sent high school students and staff to the annual Washtenaw County Youth Diversity Forum in November

Special Education

Total Number of SAS students served: **60**

30 - Deaf/Hard of Hearing Services

24 - Visually Impaired Services

1 - Forest School

4 - High Point School

1 - Young Adult Project

WISD Teacher Consultants working with SAS **7**

WISD facilitated trainings attended by SAS teachers **290**

148 Number of SAS Staff participating in START, facilitated by WISD staff

135 Number of SAS Staff completing the Non-Violent Crisis Intervention Training, facilitated by WISD staff

Business Services

Saline Area Schools utilizes the following WISD Business Services:

- New World financial system and support (partially subsidized)
- Pupil Accounting consultations and audits
- Fiscal agent for various grants
- Fiduciary for WEOC - number of SAS students served:

ECA - 5	WAVE - 4	WIHI - 63
---------	----------	-----------

Total Grant and Special Education cost reimbursements **\$8,841,978**

(Amounts PAID for the 14-15 fiscal year)

Special Education cost reimbursements (Act 18)	\$6,865,266
IDEA	\$1,175,418
IDEA Preschool	\$28,026
Reimbursement for services to Medicaid eligible students	\$465,236
Great Start Readiness Program	\$69,005
Perkins	\$234,761

Substitute Reimbursements

Assessment Literacy	\$1,777
Math & Science	\$267
Writing Collaborative	\$1,511

Human Resources and Legal Services

- **Fingerprinting services**
 - ▶ 69 individuals fingerprinted
 - ▶ 116 PESG clearance to work forms
 - ▶ 174 fingerprints disseminated
- **609 background checks for all PESG* substitutes in Washtenaw county –**

County wide expense total **\$144,542.29**

*PESG – Professional Educational Services Group (an educational staffing vendor)

Operations/Event Services

Conferred on projects with all districts and all facilities managers

Convened **10** countywide meetings

Managed the recycling grant

SAS used WISD facilities for **2** meetings

Sheraton equivalent cost of **\$1,410**

Savings through cooperative bids in construction management, electricians, plumbers, HVAC techs and mechanical services

Managed the installation of over

\$500,000

of a Michigan State Police grant with all school districts

SAS had **296** registered participants at WISD classes

Cooperative Services:

- AppliTrack
- United Streaming
- Data Director
- E2020
- Career Cruising (EDP)

Savings by SAS through REMC cooperative educational purchases -

\$71,086

