

A COUNTYWIDE OVERVIEW

Partners in Education

Washtenaw ISD and Local Districts

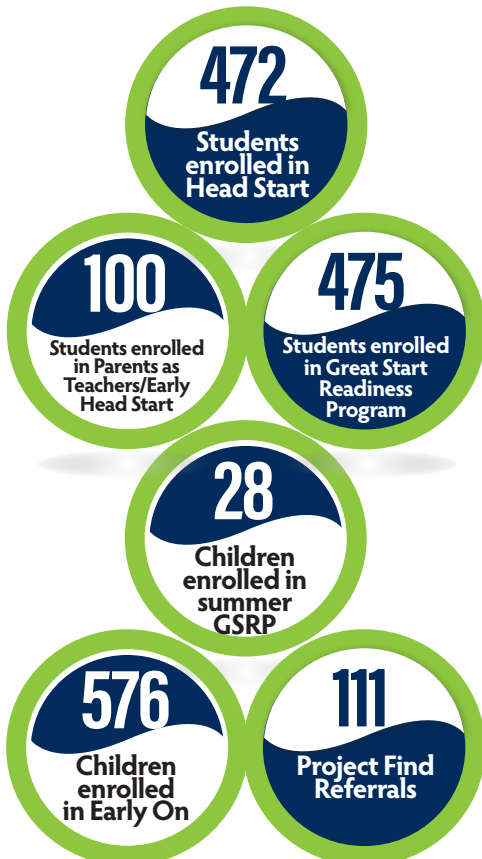
Achievement Initiatives

- 2,654** Number of students taking senior exit survey
- 1277** Number of students taking the engage survey
- 515** Number of teachers/administrators attending additional professional development and technical support training
- 250** Number of Teachers participating in Networks
- 48** Teachers participating in Intel Math
- 45** Number of Custom Professional Development Sessions

Early Childhood

Value of all Early Childhood subcontracts with local districts:

\$5,794,034
(based upon 2014-15 contracts)



Community Partnerships

- ◆ **ALICE Training**
 - Phase I - 4,500 people- including 130 train-the-trainer participants
 - Phase II - 530 early childhood education providers, bus drivers, and teachers participated in WISD hosted ALICE trainings.
 - ALICE educational materials/lessons available to over 3,300 teachers throughout the county
- ◆ **Education Project for Homeless Youth** – 1,103 students served (Includes Public School Academies and SEEs)
- ◆ **Contract facilitation and led Focus/Priority School work at:** 11 schools in 3 districts
 - Managed \$166,500 in funding for Focus/Priority work
- ◆ **Washtenaw Futures**
 - College Application Week – 698 students
 - FAFSA Completion event – 964 students
- ◆ **Youth Diversity Work**
 - All 9 districts participated in the Washtenaw Youth Diversity Forum at EMU total of 172 youth and 68 adults
 - Through a partnership with WISD and Neutral Zone, two districts developed Diversity Councils (Skyline H.S. & Lincoln H.S.)
- ◆ **School Justice Partnership**
 - Convened a cross-sector collaborative including Washtenaw County Juvenile Trial Court, Washtenaw County Sheriff's Office, non-profit community partners and K12 administrators resulting in countywide school attendance protocol rollout, fall 2015
- ◆ **Cradle to Career Collaborative Network**
 - Worked with United Way of Washtenaw County, Ann Arbor Area Community Foundation, and other local funders to redesign the school age youth county collaborative; was awarded \$147,300 to serve as the backbone entity for Success by 6 Great Start Collaborative and Washtenaw Alliance for Children and Youth. An additional \$155,000 was awarded by MDE Office of Great Start to coordinate the early childhood Great Start Collaborative.
 - Worked with the Michigan College Access Network and Washtenaw Community College to secure \$50,000 for the local college access network, Washtenaw Futures.

Your county educational service agency is committed to providing a variety of services, from professional development to technical support. For over 50 years, Washtenaw ISD has collaborated with local districts to bring innovation and educational excellence to the classroom.

Maintaining communication throughout the county is accomplished through numerous work groups that include: superintendents, board members, business directors, human resource managers, special education directors, principals, curriculum directors, technology directors, maintenance/operations directors, educational network groups, early childhood staff, and the School-Justice Partnership. Positive educational outcomes and cost-savings are realized by working efficiently and effectively together.

This at-a-glance report is designed to provide a snapshot of the services and savings local constituent districts realize through cooperative networking.

Special Education

Total Number of students served:

- 208** - Deaf/Hard of Hearing Services
- 132** - Visually Impaired Services
- 39** - Forest School
- 66** - High Point School
- 29** - Local Based Classrooms
- 15** - Deaf/Hard of Hearing Program
- 109** - Young Adult Programs
- 49** - Young Adult Project
- 18** - Court-Involved Youth

WISD Teacher Consultants **61**

WISD facilitated trainings attended by teachers **1606**

569 Number of local district staff participating in START, facilitated by WISD staff

976 Number of local district staff completing the Non-Violent Crisis Intervention Training, facilitated by WISD staff

Business Services

- ◆ Contracted business support – Washtenaw Technical Middle College (WTMC) and Chelsea
- ◆ New World financial system and support, numbers served – All 9 local districts, WISD and WTMC
- ◆ Pupil Accounting consultations and audits – All districts and Public School Academies (PSA)
- ◆ Grants oversight
 - IDEA – All districts and PSAs
 - GSRP – All districts, Central Academy, Global Tech Academy & Multicultural Academy
 - Head Start – Four districts
 - Perkins – Three districts
 - Adult Ed – Three districts
- ◆ Fiduciary for Washtenaw Educational Options Consortium, number of students served:

ECA - 423	WAVE - 272	WIHI - 372
-----------	------------	------------

Total Grant and Special Education cost reimbursements..... \$66,829,964*
(Amounts PAID for the 14-15 fiscal year)

Special Education cost reimbursements (Act 18)	\$49,071,758*
IDEA	\$9,962,271*
IDEA Preschool	\$241,686
Reimbursement for services to Medicaid eligible students	\$1,682,024
Great Start Readiness Program	\$3,121,951**
Head Start	\$1,891,138
Perkins	\$432,443
Adult Education	\$384,538
Substitute Reimbursements	\$42,155*

* Includes Public School Academies

** Includes Public School Academies and Private Daycare Providers

Human Resources and Legal Services

- **Fingerprinting services**
 - ▶ 1,392 individuals fingerprinted
 - ▶ 831 PESG clearance to work forms
 - ▶ 1,228 fingerprints disseminated
- **609 background checks for all PESG*** substitutes in Washtenaw county –

County wide expense total **\$144,542.29**

*PESG – Professional Educational Services Group (an educational staffing vendor)

Operations/Event Services

Conferred on projects with all districts and all facilities managers

Convened **10** countywide meetings

Savings through cooperative bids in construction management, electricians, plumbers, HVAC techs and mechanical services

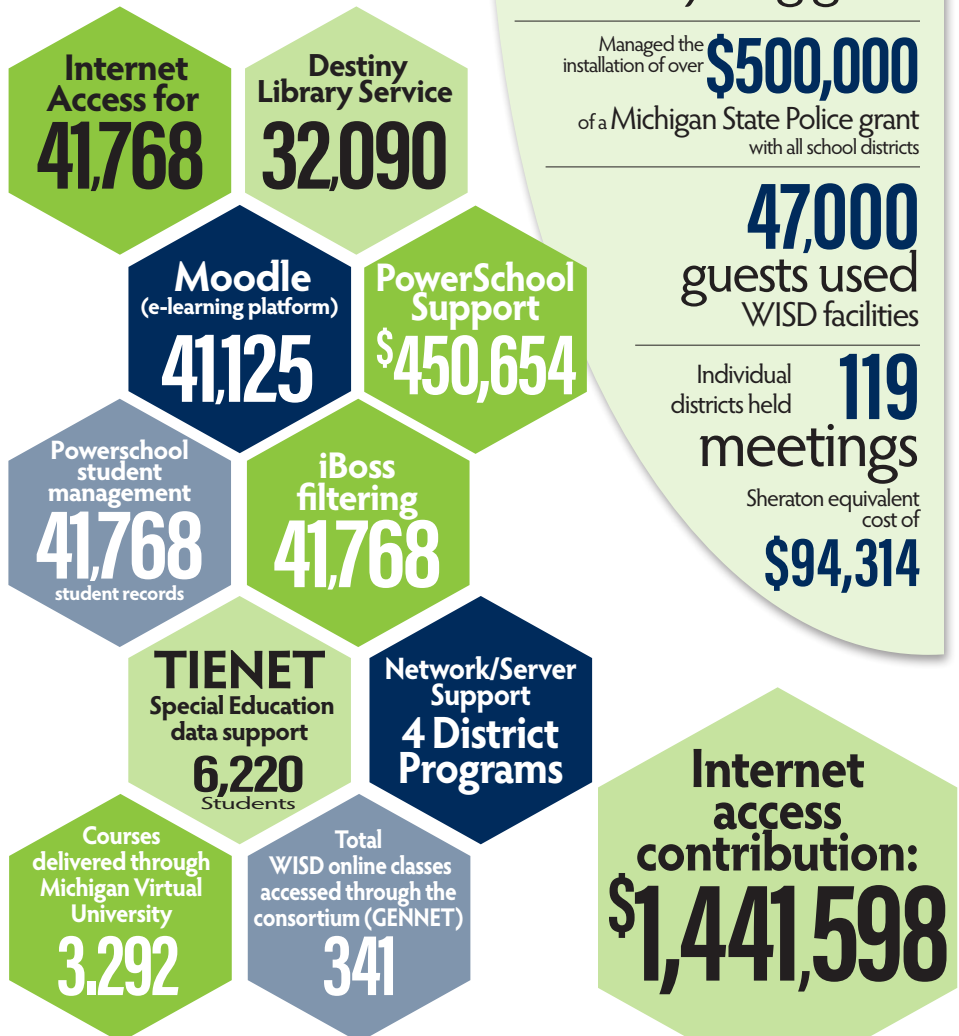
Managed the recycling grant

Managed the installation of over **\$500,000** of a Michigan State Police grant with all school districts

47,000 guests used WISD facilities

Individual districts held **119** meetings
Sheraton equivalent cost of **\$94,314**

Technology/Data Management



Cooperative Services:

- AppliTrack - **9** districts
- Help Desk Service - **3** districts
- Data Director - **3** districts
- E2020 - **9** districts
- Career Crusing (EDP) - **7** districts

Savings through REMC cooperative educational purchases -

\$989,693**

*This figure reflects the full cost of Internet access, reduced by a countywide percentage based on the combined districts free and reduced lunch percentages. The 2014-15 percentage was 55% **Includes Public School Academies