

# Partners in Education

## Washtenaw ISD and Ypsilanti Community Schools

### Achievement Initiatives

#### Teacher-Leader Development through Instructional Networks

A systemic approach to building capacity in teacher-leaders. Each teacher-leader represented receives between 60-120 hours of professional development plus support to lead the instructional work in their school.

#### Additional Professional Development

#### 44 TEACHERS AND LEADERS

attending additional trainings in Writing Collaborative, Reading Apprenticeship, three literacy summits, 5 Tools Science, transgender PD, HIV PD, two safe schools (2), and the Principals' Academy

44 DAYS of Custom Professional Development

- 35 Intel Math
- 11 Assessment Literacy
- 5 Early Literacy
- 4 Adaptive Leadership
- 4 Science Workgroup
- 3 Culture & Diversity
- 2 Reading Apprenticeship

#### 24 TEACHERS AND LEADERS

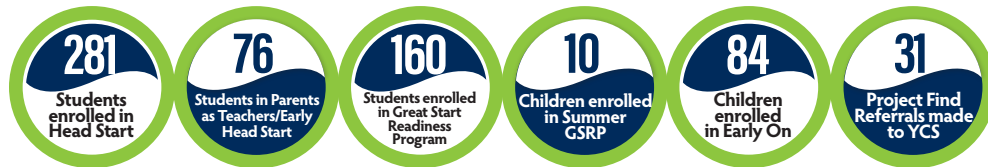
received technical support through professional learning in Cognitive Coaching, Critical Friends, SAT Overview, Program Evaluation Tool/School Improvement, Kindergarten Entry Assessment, Title III, Personalized Curriculum Session

#### School Culture Survey and Analysis Services

204

Students participated in Senior Exit Survey; Customized Senior Exit Survey Report – YCS H.S.

\*\*Provided technical assistance to Ypsilanti New Tech with the development of the state required Priority School Turnaround plan.



### Early Childhood

Value of all Early Childhood subcontracts with Ypsilanti: **\$3,124,378** (based upon 2014-15 contracts)

Your county educational service agency is committed to providing a variety of services, from professional development to technical support. For over 50 years, Washtenaw ISD has collaborated with local districts to bring innovation and educational excellence to the classroom.

Maintaining communication throughout the county is accomplished through numerous work groups that include: superintendents, board members, business directors, human resource managers, special education directors, principals, curriculum directors, technology directors, maintenance/operations directors, educational network groups, early childhood staff, and the School-Justice Partnership. Positive educational outcomes and cost-savings are realized by working efficiently and effectively together.

This at-a-glance report is designed to provide a snapshot of the services and savings local constituent districts realize through cooperative networking.

### Community Partnerships

- ◆ **ALICE Training** – Ypsilanti staff trained in response to the potential of an active shooter.
- ◆ **Education Project for Homeless Youth** – 246 students served
- ◆ **Grants**
  - Recycling Grant - \$4,000
  - Michigan State Police Safety Grant \$57,844
  - Investing in Innovation STEM Early College Expansion Project Grant - \$102,541
- ◆ **Contract facilitation and led Focus School work valued at \$2,250 in Regional Assistance Grant support at:**
  - Estabrook Elementary School
- ◆ **Supported Priority School work valued at \$100,000 in Regional Assistance Grant support at:**
  - Holmes Elementary
  - Ypsilanti Community Middle School
- ◆ **Washtenaw Futures**
  - College Application Week – 237 students participated
  - FAFSA Completion event – 133 students participated
- ◆ **Youth Diversity Work**
  - Ypsilanti sent high school students and staff to the annual Washtenaw County Youth Diversity Forum in November

### Special Education

Total Number of YCS students served: **168**

- 40 - Deaf/Hard of Hearing Services
- 31 - Visually Impaired Services
- 14 - Forest School
- 11 - High Point School
- 10 - Local Based Classrooms
- 7 - Deaf/Hard of Hearing Program
- 30 - Young Adult Programs
- 20 - Young Adult Project
- 5 - Court-Involved Youth

WISD Teacher Consultants working with YCS **12**

WISD facilitated trainings attended by YCS teachers **221**

73 Number of YCS Staff participating in START, facilitated by WISD staff

136 Number of YCS Staff completing the Non-Violent Crisis Intervention Training, facilitated by WISD staff

## Business Services

Ypsilanti Community Schools utilizes the following WISD Business Services:

- New World financial system and support (partially subsidized)
- Pupil Accounting consultations and audits
- Fiscal agent for various grants
- Fiduciary for WEOC - number of Ypsilanti students served:

ECA - 86	WAVE - 121	WIHI - 146
----------	------------	------------

**Total Grant and Special Education cost reimbursements** ..... **\$6,273,908**

(Amounts PAID for the 14-15 fiscal year)

Special Education cost reimbursements (Act 18)	\$3,403,910
IDEA	\$1,735,072
IDEA Preschool	\$10,762
Great Start Readiness Program	\$33,704
Head Start	\$956,808
Perkins	\$60,237
Adult Education	\$62,978

## Substitute Reimbursements

Assessment Literacy .....	\$3,826
Math & Science .....	\$1,502
Culture & Diversity .....	\$555
Reading Apprenticeship.....	\$1,336

## Human Resources and Legal Services

- **Fingerprinting services**
  - ▶ 78 individuals fingerprinted
  - ▶ 120 PESG clearance to work forms
  - ▶ 143 fingerprints disseminated
- **609 background checks for all PESG\*** substitutes in Washtenaw county –

County wide expense total **\$144,542.29**

\*PESG – Professional Educational Services Group (an educational staffing vendor)

## Operations/Event Services

Conferred on projects with all districts and all facilities managers

Convened **10** countywide meetings

Managed the recycling grant

YCS used WISD facilities for **10** meetings

Sheraton equivalent cost of **\$3,395**

Savings through cooperative bids in construction management, electricians, plumbers, HVAC techs and mechanical services

Managed the installation of over

**\$500,000**

of a Michigan State Police grant with all school districts

YCS had **428** registered participants at WISD classes

## Cooperative Services:

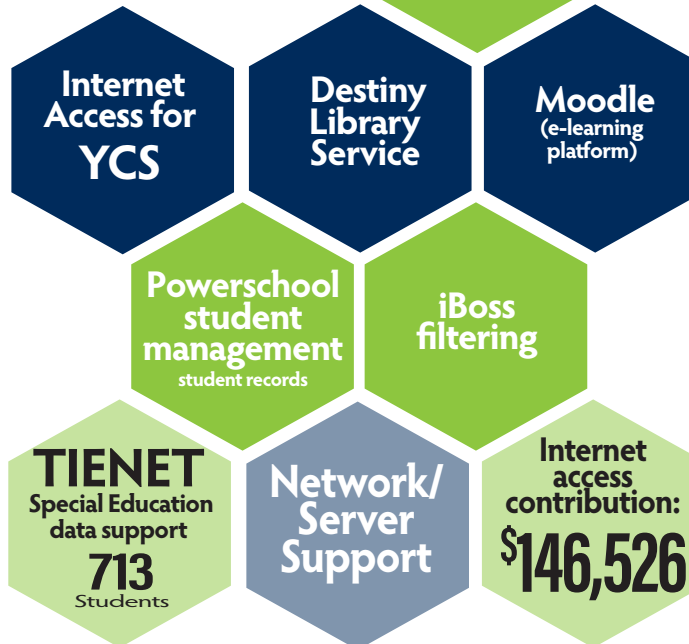
- AppliTrack
- Help Desk Service
- United Streaming
- E2020
- Career Crusing (EDP)

Savings by YCS through REMC cooperative educational purchases -

**\$69,860**

## Technology/Data Management

**4,145** STUDENTS



**TINET**  
Special Education data support  
**713**  
Students

Network/  
Server  
Support

Internet access contribution:  
**\$146,526**