

Partners in Education

Washtenaw ISD and Dexter Community Schools

Achievement Initiatives

Teacher-Leader Development through Instructional Networks

A systemic approach to building capacity in teacher-leaders. Each teacher-leader represented receives between 60-120 hours of professional development plus support to lead the instructional work in their school.

Additional Professional Development

2 DAYS of Custom Professional Development

92 TEACHERS AND LEADERS

attending additional trainings in Writing Collaborative, Reading Apprenticeship, three literacy summits, 5 Tools Science, transgender PD, HIV PD, safe schools (2), and the Principals' Academy

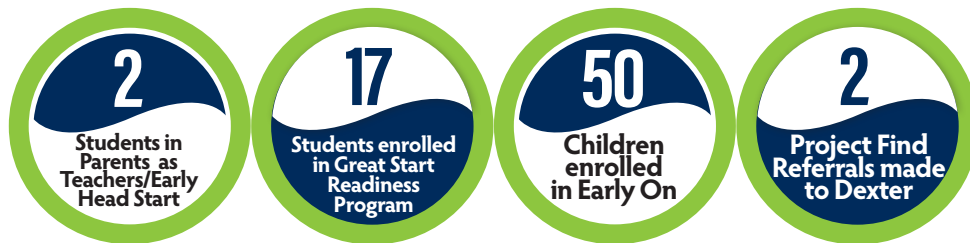
- 4** Early Literacy
- 3** Reading Apprenticeship
- 2** Assessment Literacy
- 2** Culture & Diversity
- 1** Writing Collaborative
- 1** Adaptive Leadership

23 TEACHERS AND LEADERS

received technical support through professional learning in Cognitive Coaching, Critical Friends, SAT Overview, Program Evaluation Tool/School Improvement, Kindergarten Entry Assessment, Title III, Personalized Curriculum Session

School Culture Survey and Analysis Services

276 Students participating in Senior Exit Survey



Early Childhood

Value of all Early Childhood subcontracts with Dexter: **\$1,44,542.29** (based upon 2014-15 contracts)

Your county educational service agency is committed to providing a variety of services, from professional development to technical support. For over 50 years, Washtenaw ISD has collaborated with local districts to bring innovation and educational excellence to the classroom.

Maintaining communication throughout the county is accomplished through numerous work groups that include: superintendents, board members, business directors, human resource managers, special education directors, principals, curriculum directors, technology directors, maintenance/operations directors, educational network groups, early childhood staff, and the School-Justice Partnership. Positive educational outcomes and cost-savings are realized by working efficiently and effectively together.

This at-a-glance report is designed to provide a snapshot of the services and savings local constituent districts realize through cooperative networking.

Community Partnerships

- ◆ **ALICE Training** – Dexter staff trained in response to the potential of an active shooter.
- ◆ **Education Project for Homeless Youth** – 42 students served
- ◆ **Grants**
 - Recycling Grant - **\$4,000**
 - Michigan State Police Safety Grant - **\$53,615**
- ◆ **Washtenaw Futures**
 - College Application Week – 96 students participated
 - FAFSA Completion event – 191 students participated
- ◆ **Youth Diversity Work**
 - Dexter sent high school students and staff to the annual Washtenaw County Youth Diversity Forum in November

Special Education

Total Number of DCS students served: **52**

- 21** - Deaf/Hard of Hearing Services
- 10** - Visually Impaired Services
- 3** - Forest School
- 2** - High Point School
- 3** - Local Based Classrooms
- 8** - Young Adult Programs
- 5** - Young Adult Project

WISD Teacher Consultants working with DCS **6**

WISD facilitated trainings attended by DCS teachers **136**

21 Number of DCS Staff participating in START, facilitated by WISD staff

109 Number of DCS Staff completing the Non-Violent Crisis Intervention Training, facilitated by WISD staff

Business Services

Dexter Community Schools utilizes the following WISD Business Services:

- New World financial system and support (partially subsidized)
- Pupil Accounting consultations and audits
- Fiscal agent for various grants
- Fiduciary for WEOC - number of DCS students served:

| | |
|-------|--------|
| ECA-9 | WAVE-5 |
|-------|--------|

Total Grant and Special Education cost reimbursements.....**\$3,797,030**

(Amounts PAID for the 14-15 fiscal year)

| | |
|--|-------------|
| Special Education cost reimbursements (Act 18) | \$3,027,027 |
| IDEA | \$608,789 |
| IDEA Preschool | \$17,128 |
| Reimbursement for services to Medicaid eligible students | \$63,786 |
| Great Start Readiness Program | \$77,280 |

Substitute Reimbursements

| | |
|------------------------------|---------|
| Assessment Literacy | \$666 |
| Math & Science | \$622 |
| Writing Collaborative | \$533 |
| Culture & Diversity | \$44 |
| Reading Apprenticeship | \$1,155 |

Human Resources and Legal Services

- **Fingerprinting services**
 - ▶ 92 individuals fingerprinted
 - ▶ 92 PESG clearance to work forms
 - ▶ 87 fingerprints disseminated
- **609 background checks for all PESG*** substitutes in Washtenaw county –

County wide expense total **\$144,542.29**

*PESG – Professional Educational Services Group (an educational staffing vendor)

Operations/Event Services

Conferred on projects with all districts and all facilities managers

Convened **10** countywide meetings

Managed the recycling grant

DCS used WISD facilities for **7** meetings

Sheraton equivalent cost of **\$2,800**

Savings through cooperative bids in construction management, electricians, plumbers, HVAC techs and mechanical services

Managed the installation of over

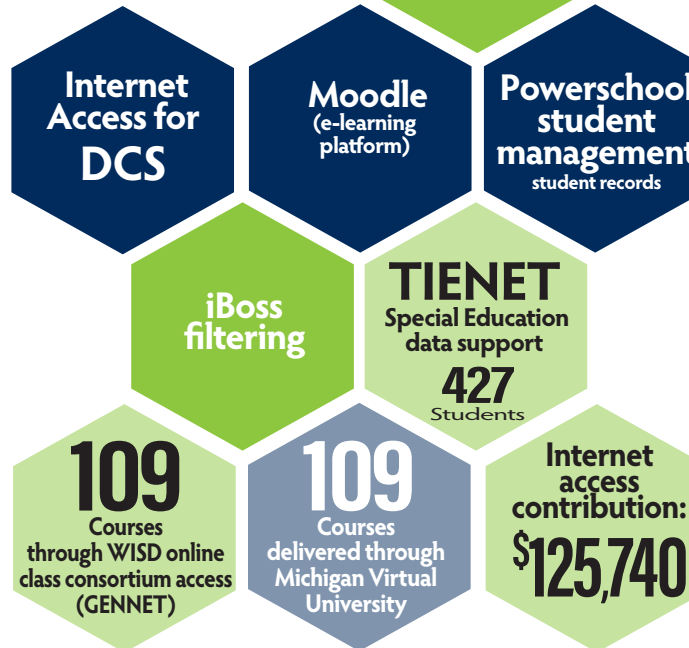
\$500,000

of a Michigan State Police grant with all school districts

DCS had **194** registered participants at WISD classes

Technology/Data Management

3,557 STUDENTS



Cooperative Services:

- AppliTrack
- United Streaming
- E2020

Savings by DCS through REMC cooperative educational purchases -

\$84,549