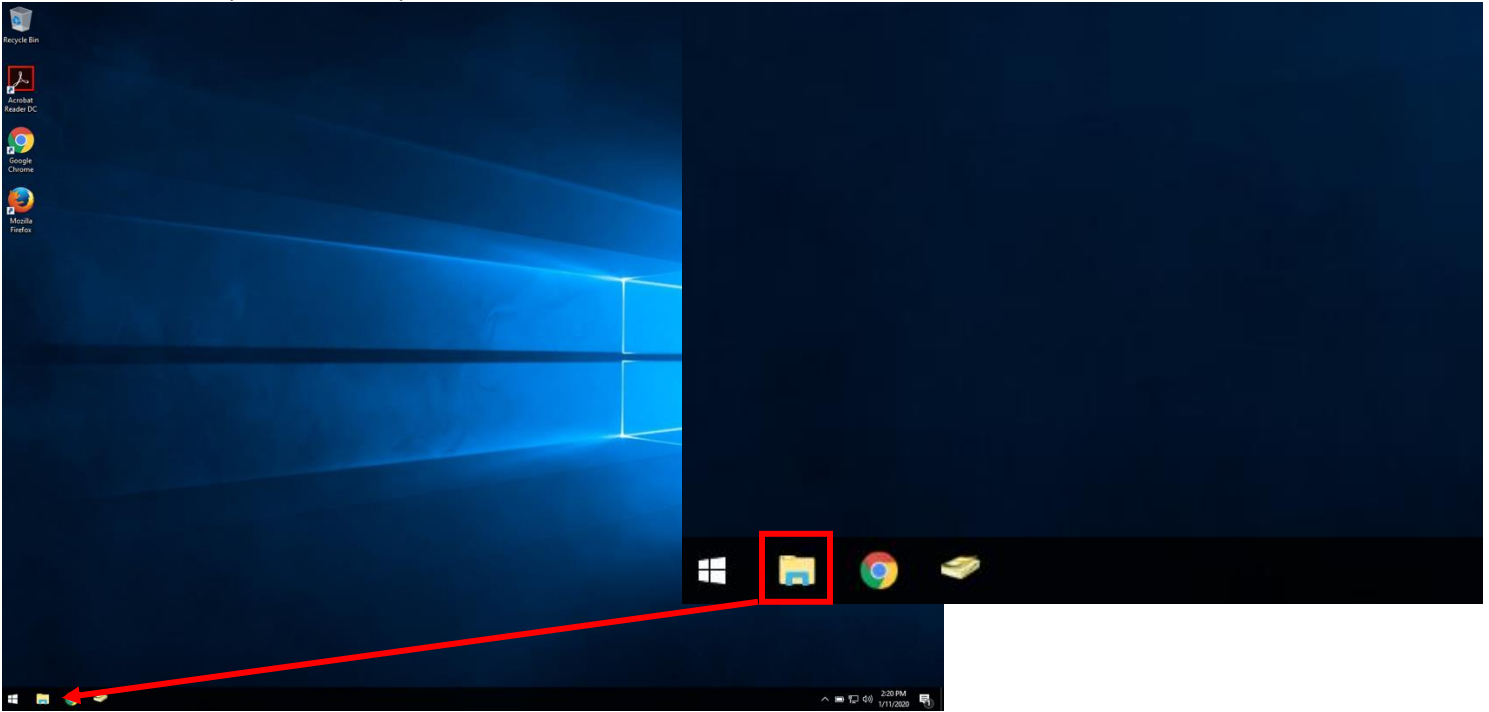
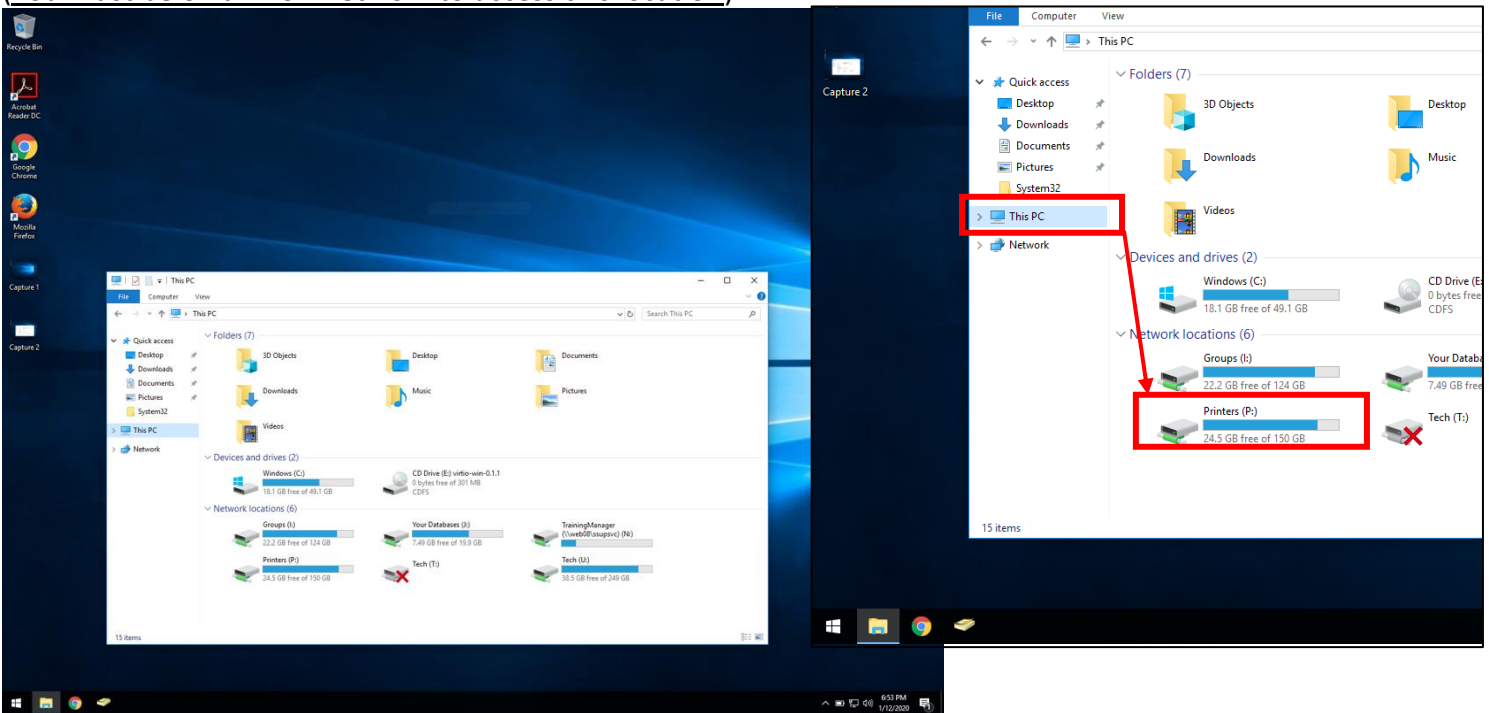


Connecting to WISD Printers

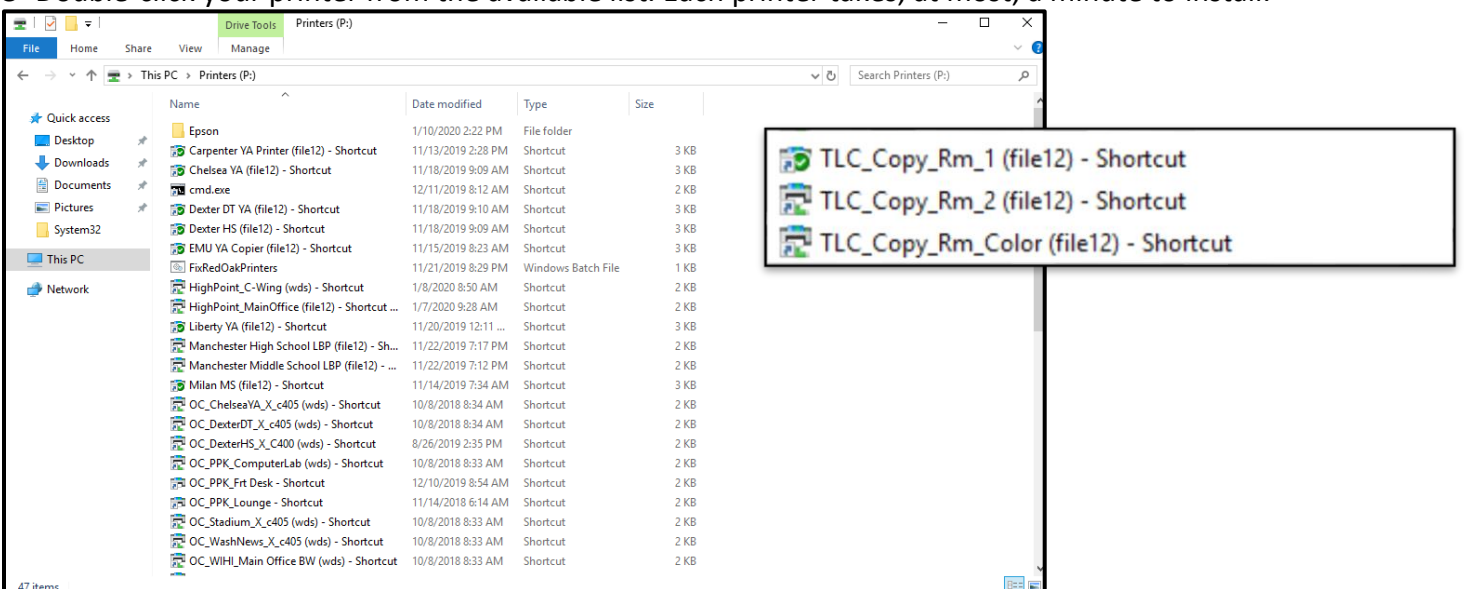
1- From the desktop select file explorer from the taskbar.



2- Locate and select "This PC" on the left-hand side and open the P: drive near the bottom. (You must be on a WISD network to access this location)



3- Double-click your printer from the available list. Each printer takes, at most, a minute to install.



*please note some printers might not be available in this drive.
Please call x1286 if you need additional help or have any questions.